

Wing Mirror W/LED Unit Set Used with 1/10 RC touring car NO.48060

● Symbols used throughout the instruction manual, comprise:



Cut off shaded portion.



5mm
Drill holes with
the specified diameter.



Pay close attention here!



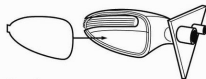
Must be purchased
separately.



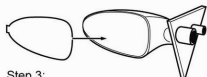
Assemble left and right sides
the same way.



Step 1:
Stick the interior cover inside the wing
mirror.



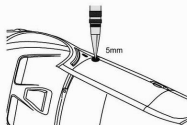
Step 2:
Stick the silver sticker on the plastic mirror.



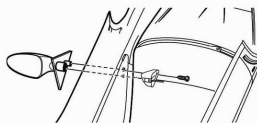
Step 3:
Add some glue on the plastic mirror,
then put the mirror cover on the wing
mirror.



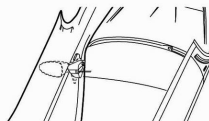
Step 4:
Put the 3mm LED light on the mirror mount.



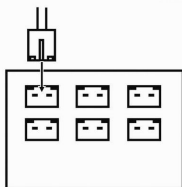
Step 5:
We are recommended use our body reamer
to drill a hole for insert the wing mirror on
your car body.



Step 6:
Insert the wing mirror on the hole we are
drill on step 4, and the other end put the
mirror mount to lock up the end of wing mirror.



Step 7:
Arrange all the cable from your car body and test the wing mirror are well install or not.



Step8:
Connect the 3mm LED
light on our 3 racing LED
system you can connect on socket
3, 4 or function socket depend on
your own choose

Item Include:

