

● Symbols used throughout the instruction manual, comprise:



Cut off shaded portion.



5mm
Drill holes with
the specified diameter.



Pay close attention here!



Must be purchased
separately.

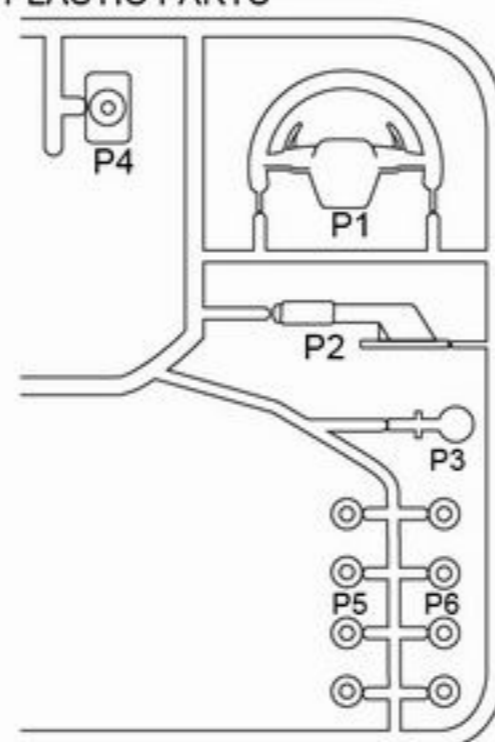


Assemble left and right sides
the same way.

PARTS

PLASTIC PARTS	-----	X1
PC PARTS	-----	X5
DECAL SHEET	-----	X2
PARTS BAG		
DOUBLE-SIDED TAPE	-----	X1
TAPPING SCREW	-----	X6

PLASTIC PARTS



PC PARTS

P7



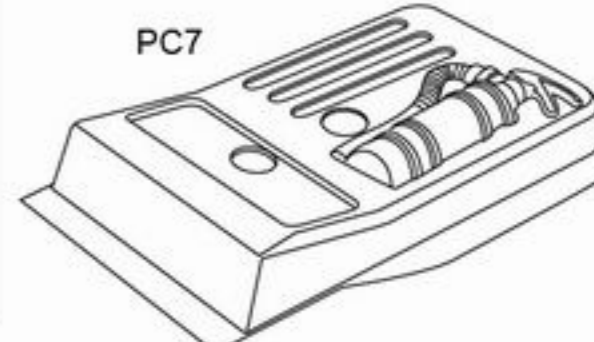
PC6



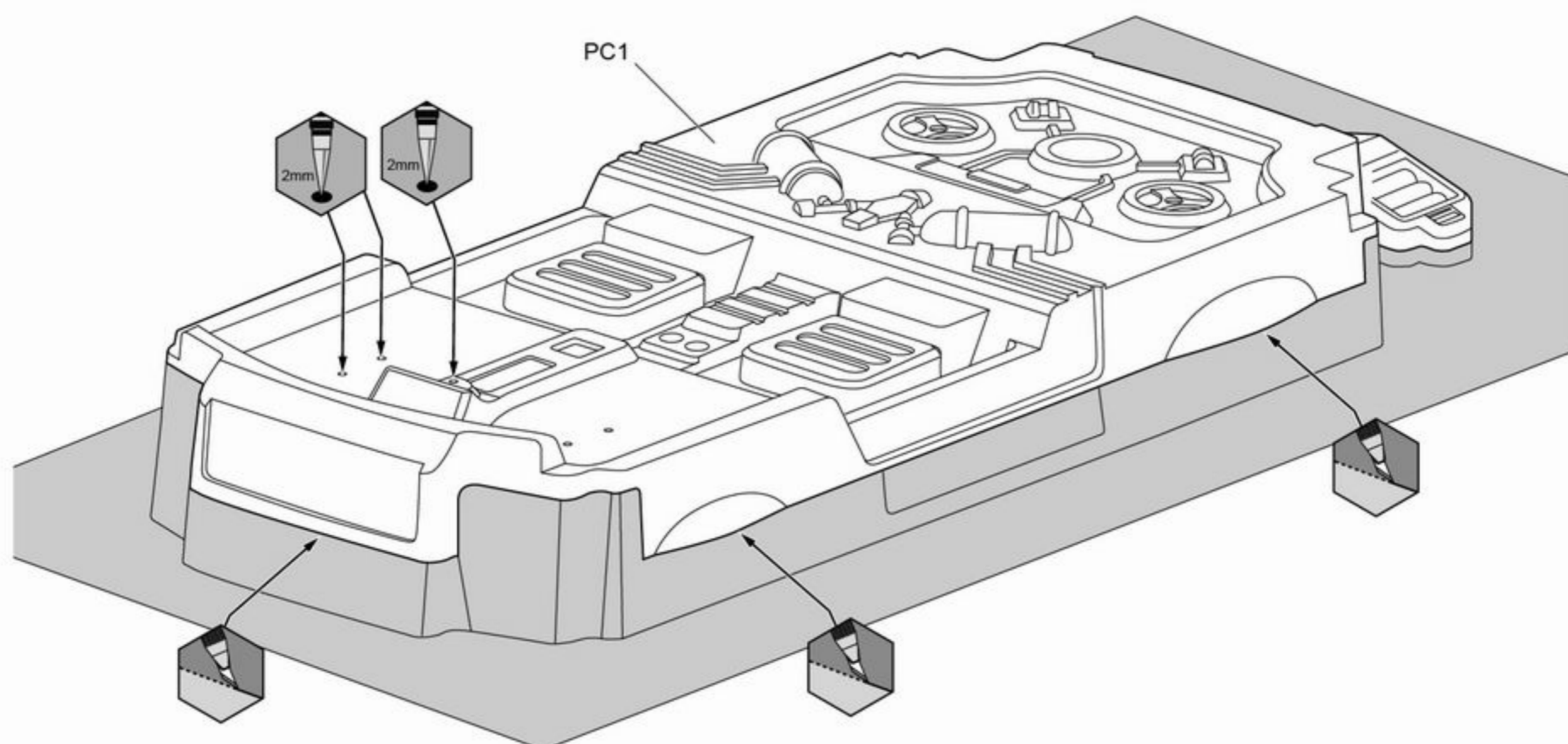
P8

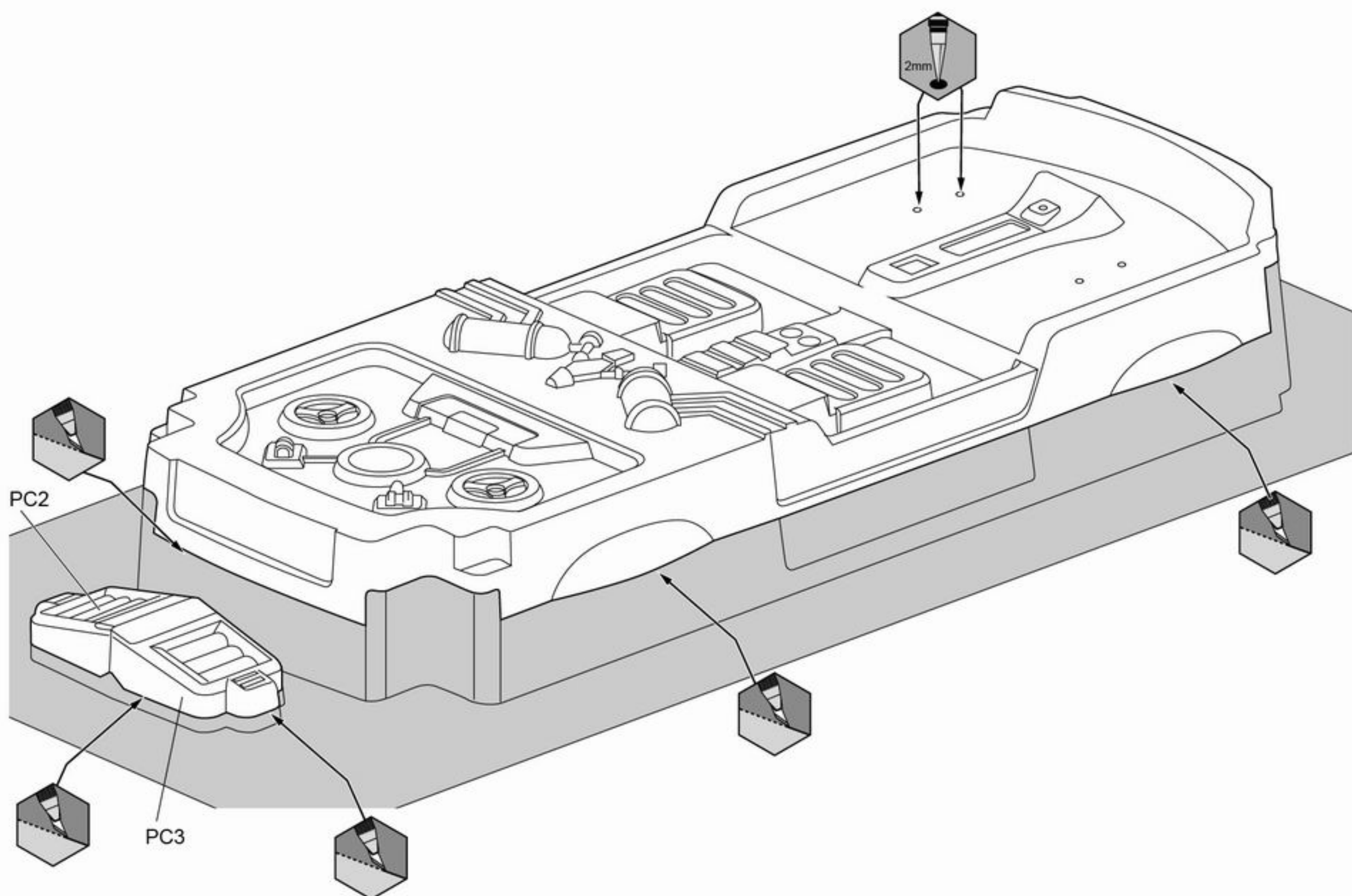


PC7

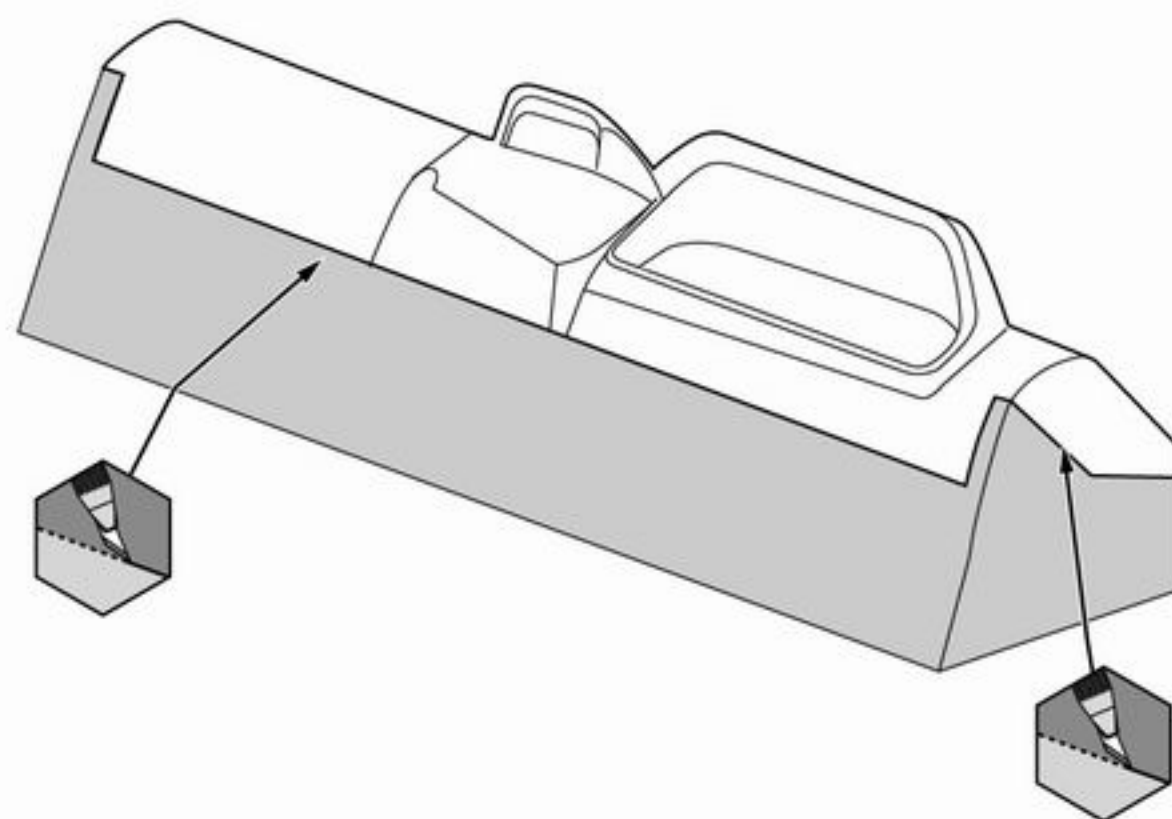
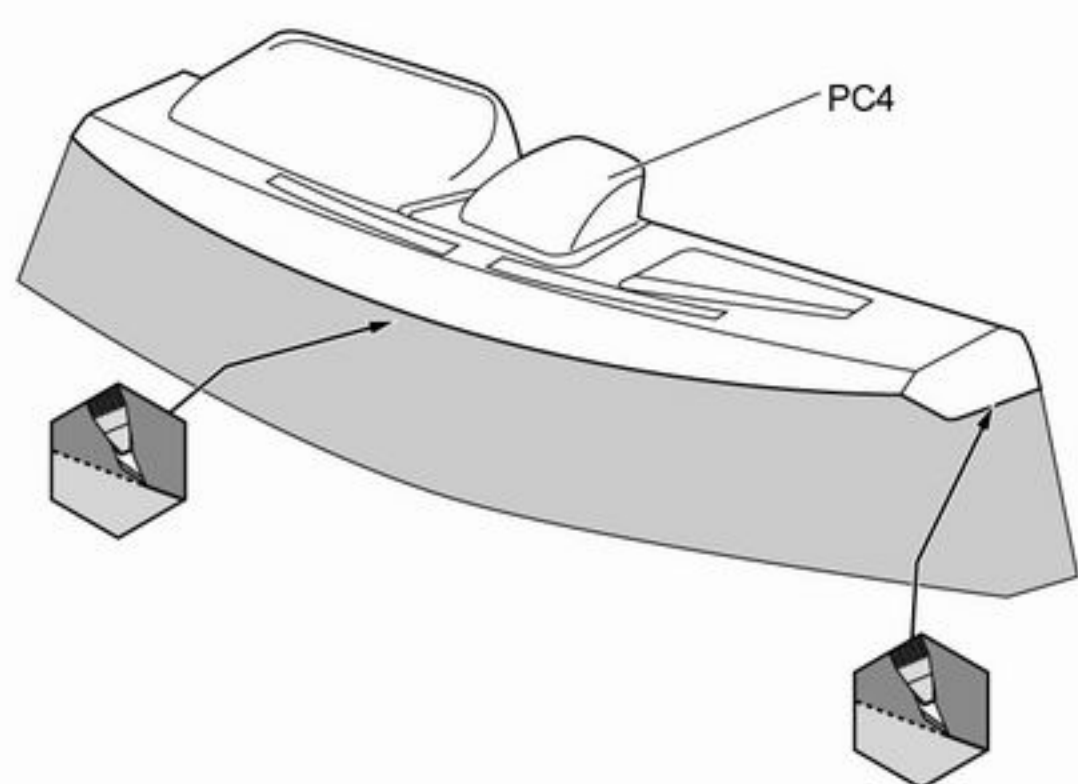


1 Cutting

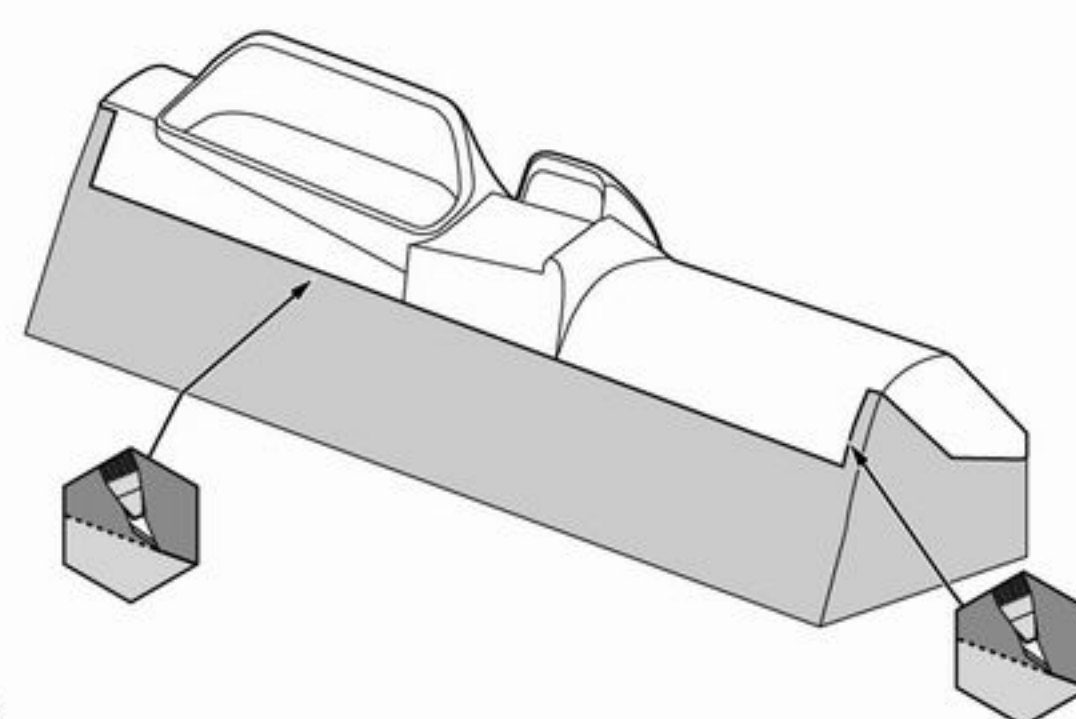
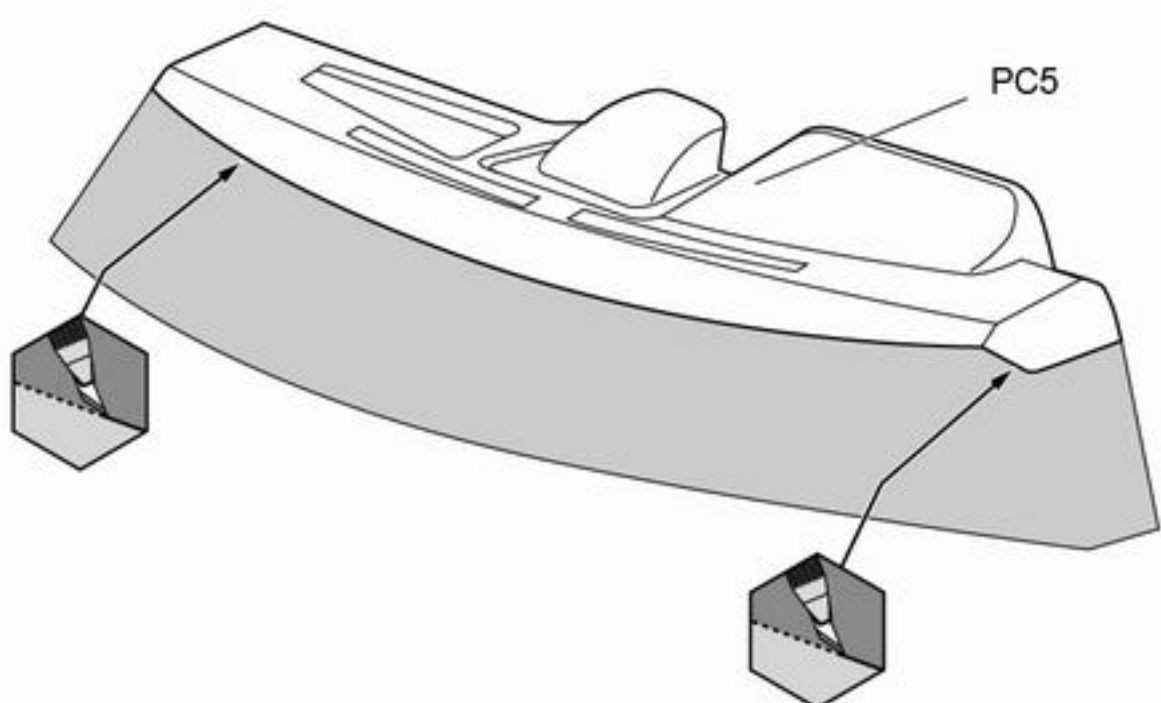




Dashboard (Right)



Dashboard (Left)



2 Painting

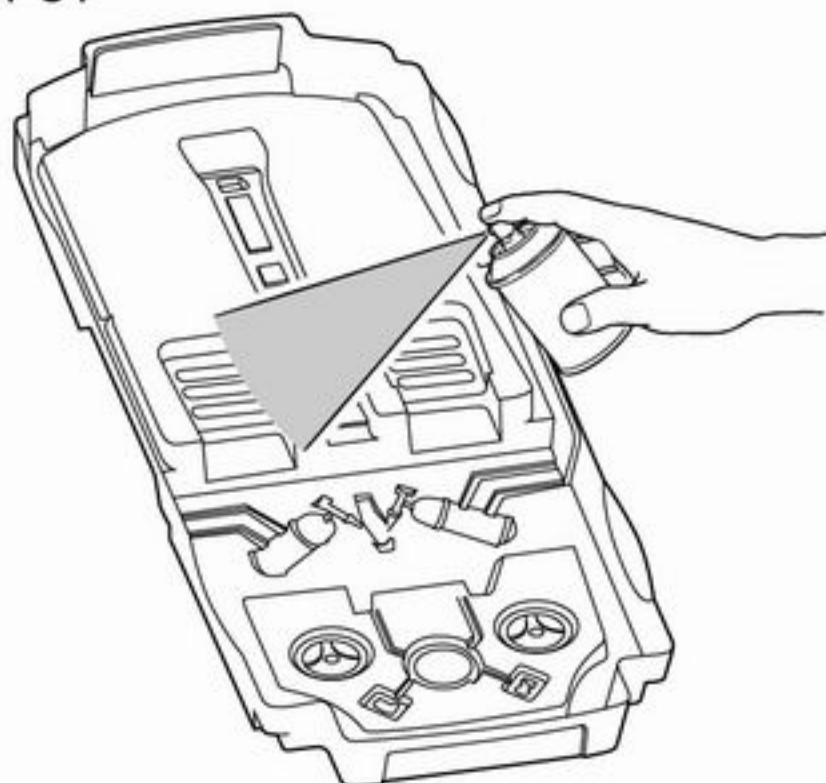
PC1 PC2 PC3 PC4 PC5 PC6 PC7

- 1 Before painting, use a neutral detergent to remove any oil residues and dirt.

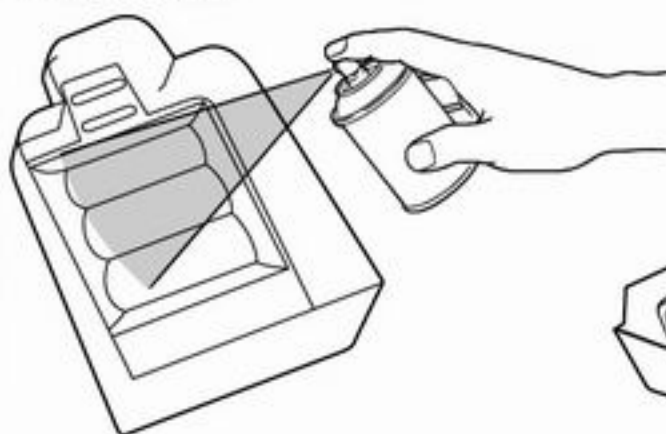


- 2 Paint black spray color from the inside.

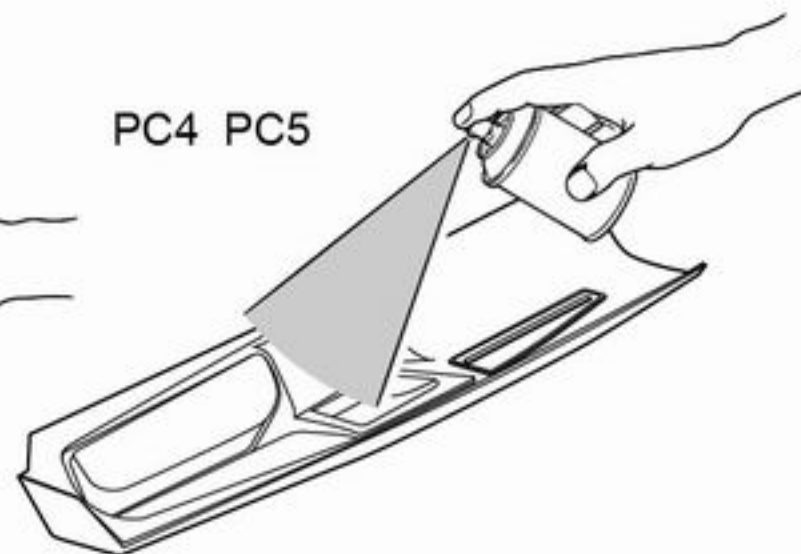
PC1



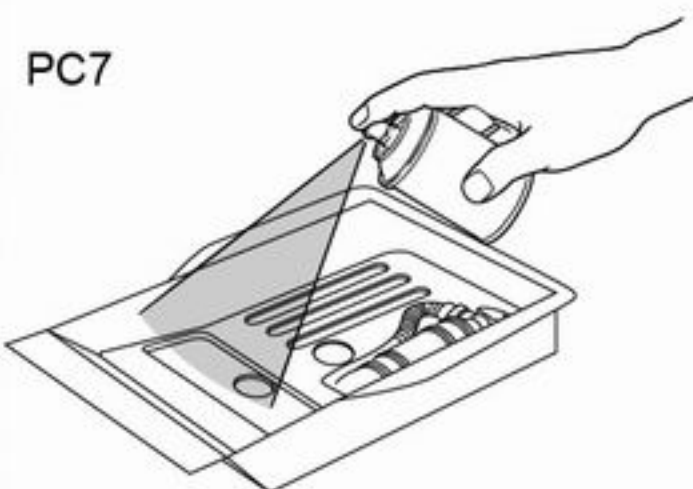
PC2 PC3



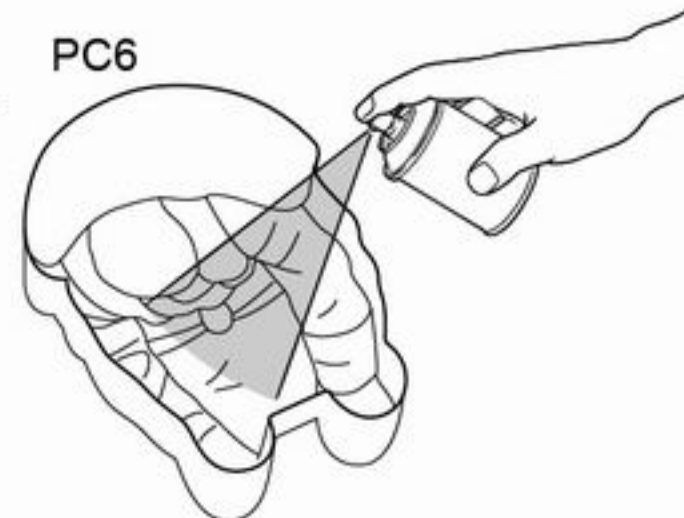
PC4 PC5



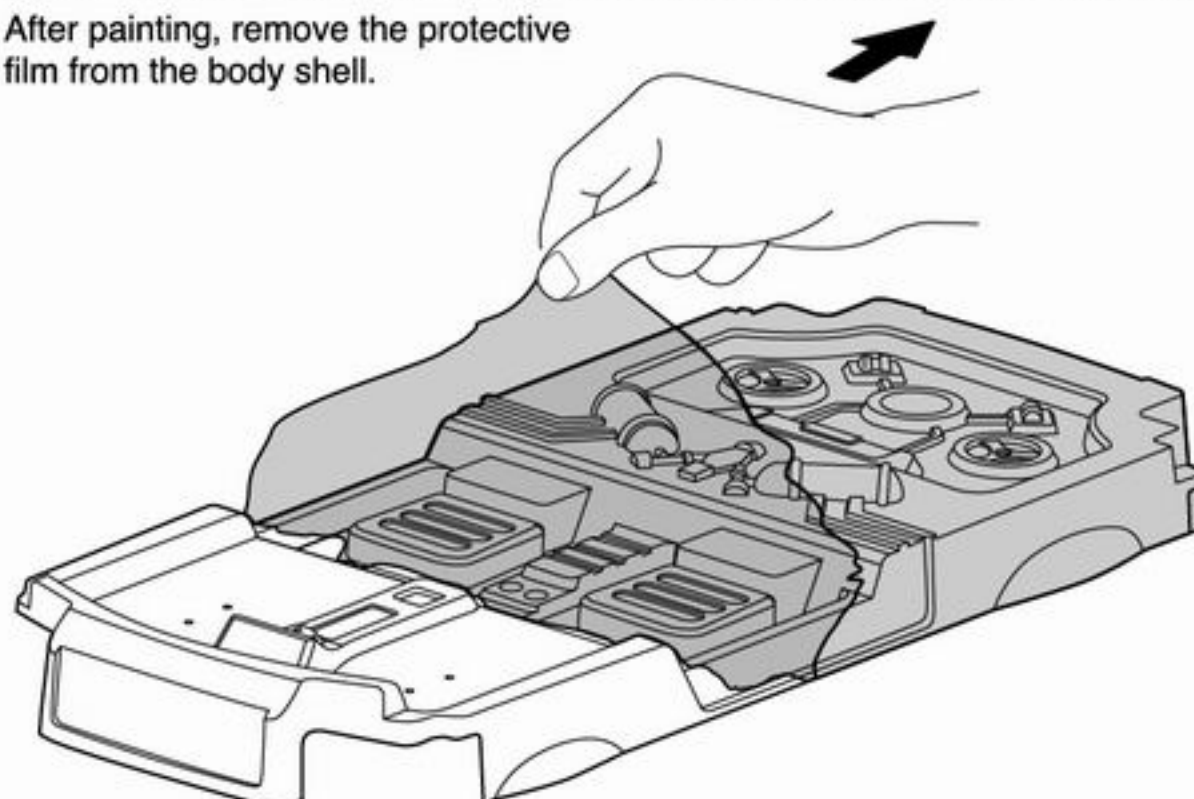
PC7



PC6

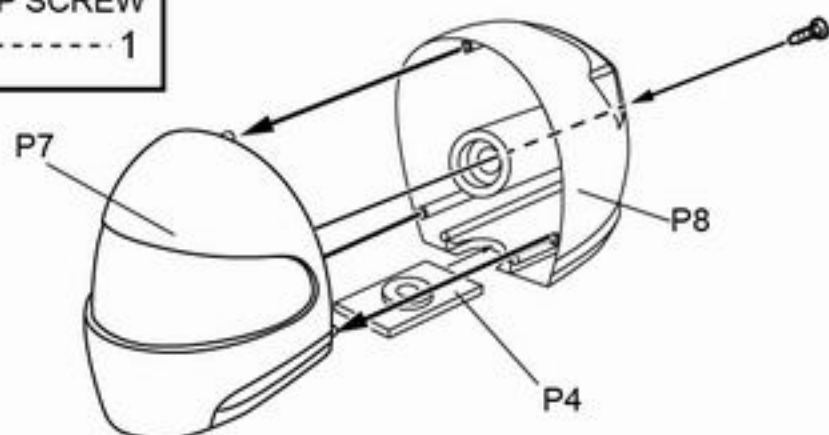


- 3 After painting, remove the protective film from the body shell.



2X7MM F/H TP SCREW

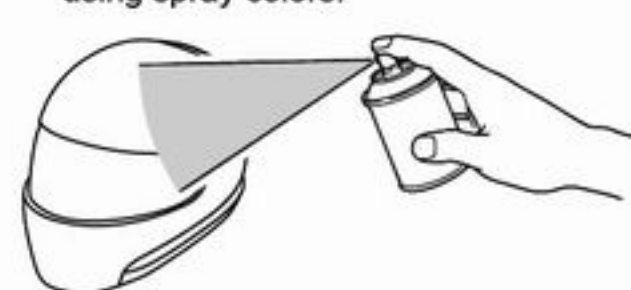
1



- 1 Before painting, use a neutral detergent to remove any oil residues and dirt.



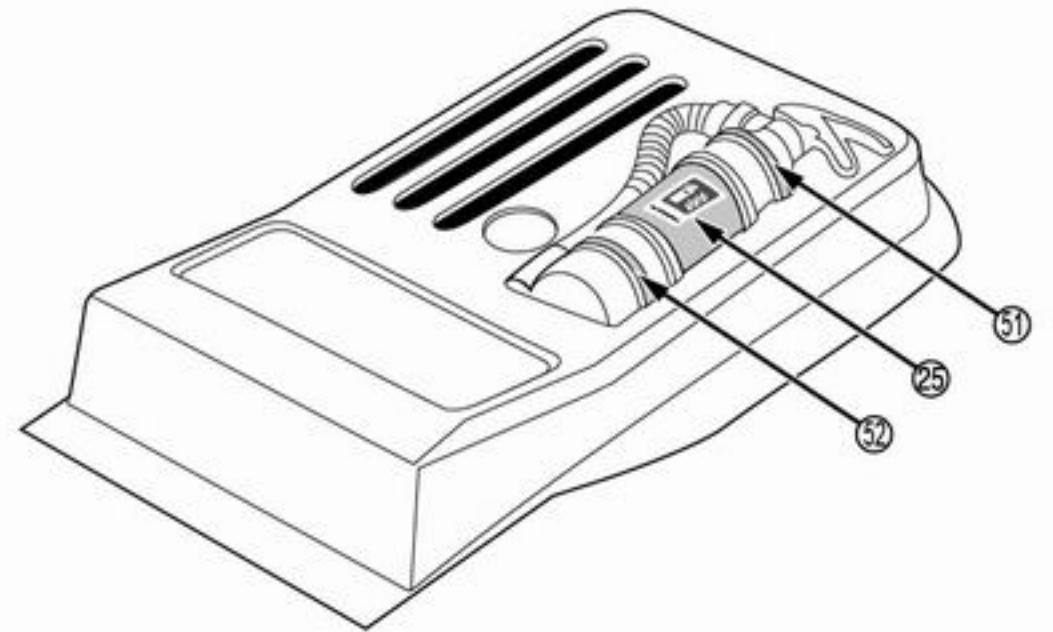
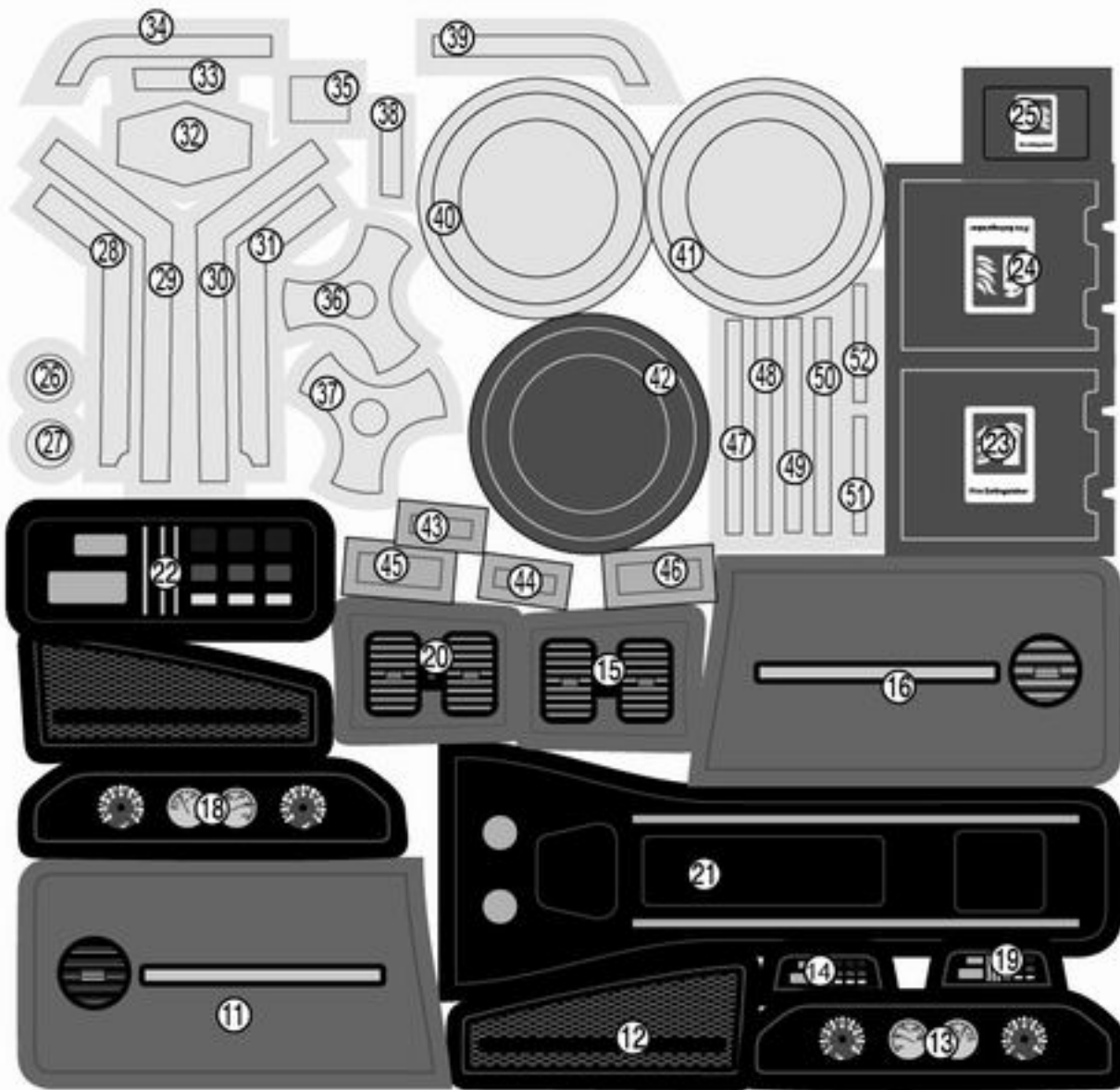
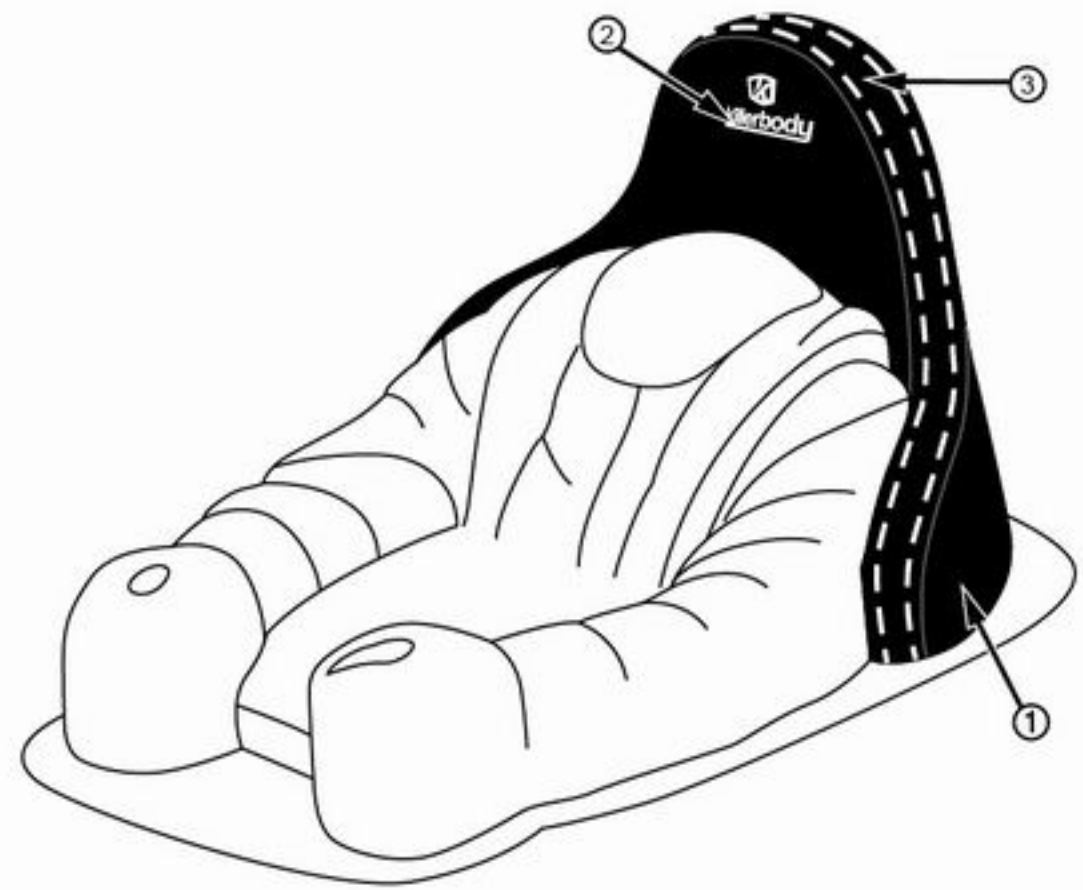
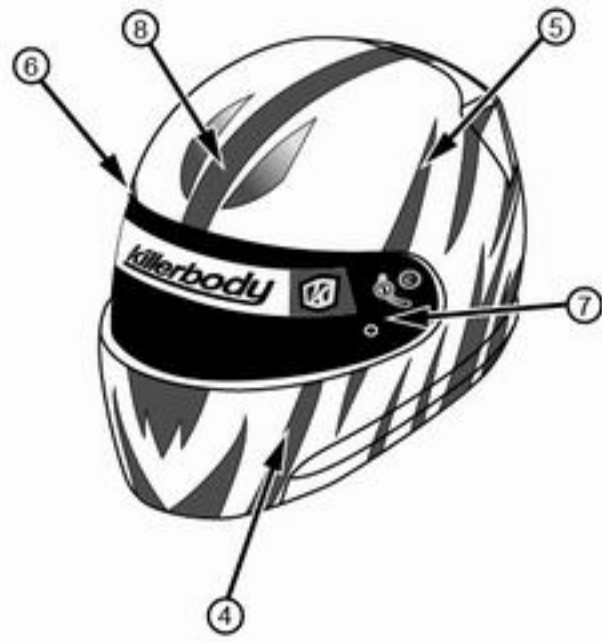
- 2 Paint the helmet from the outside using spray colors.



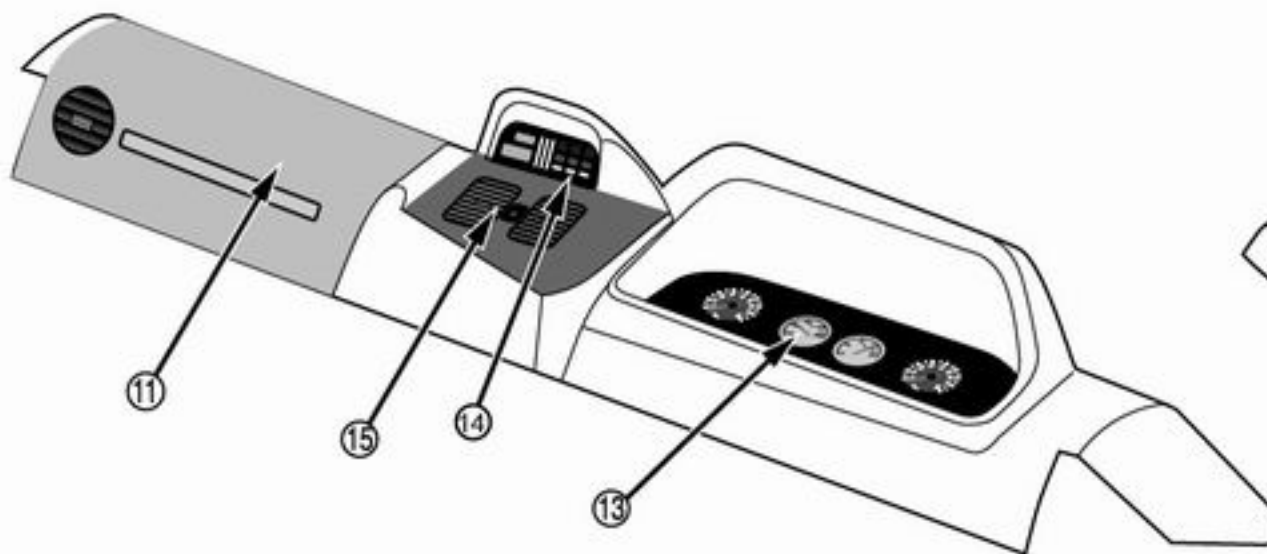
3 Decal

► The decal numbers between brackets are only for the opposite side.

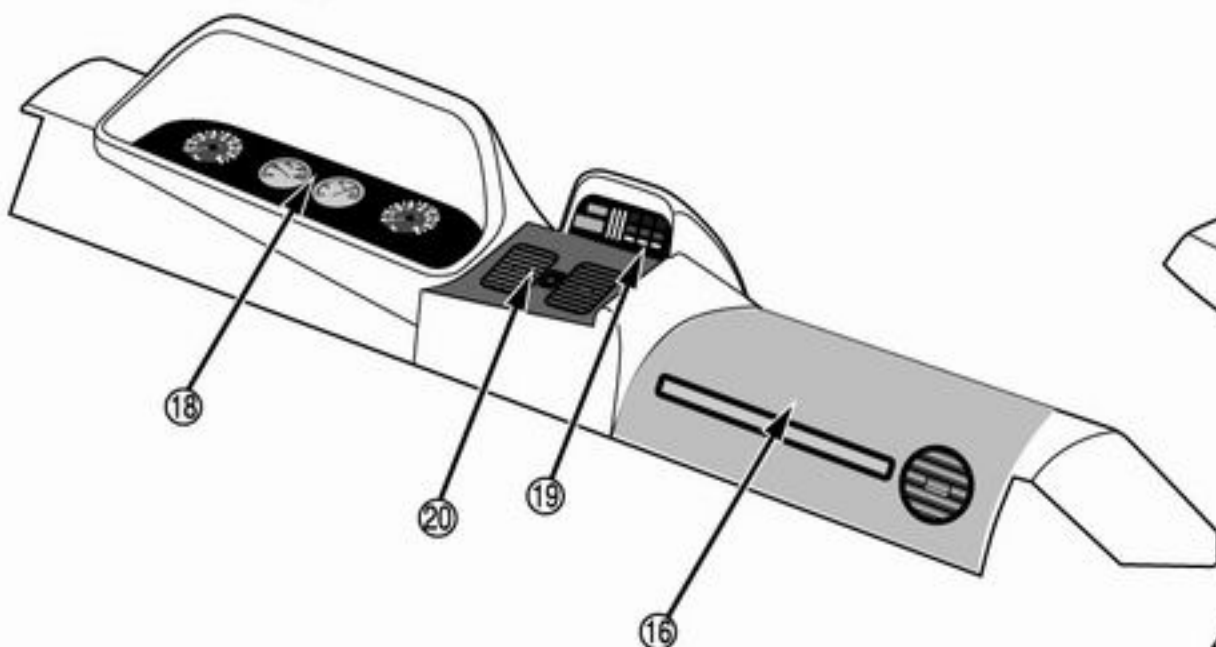


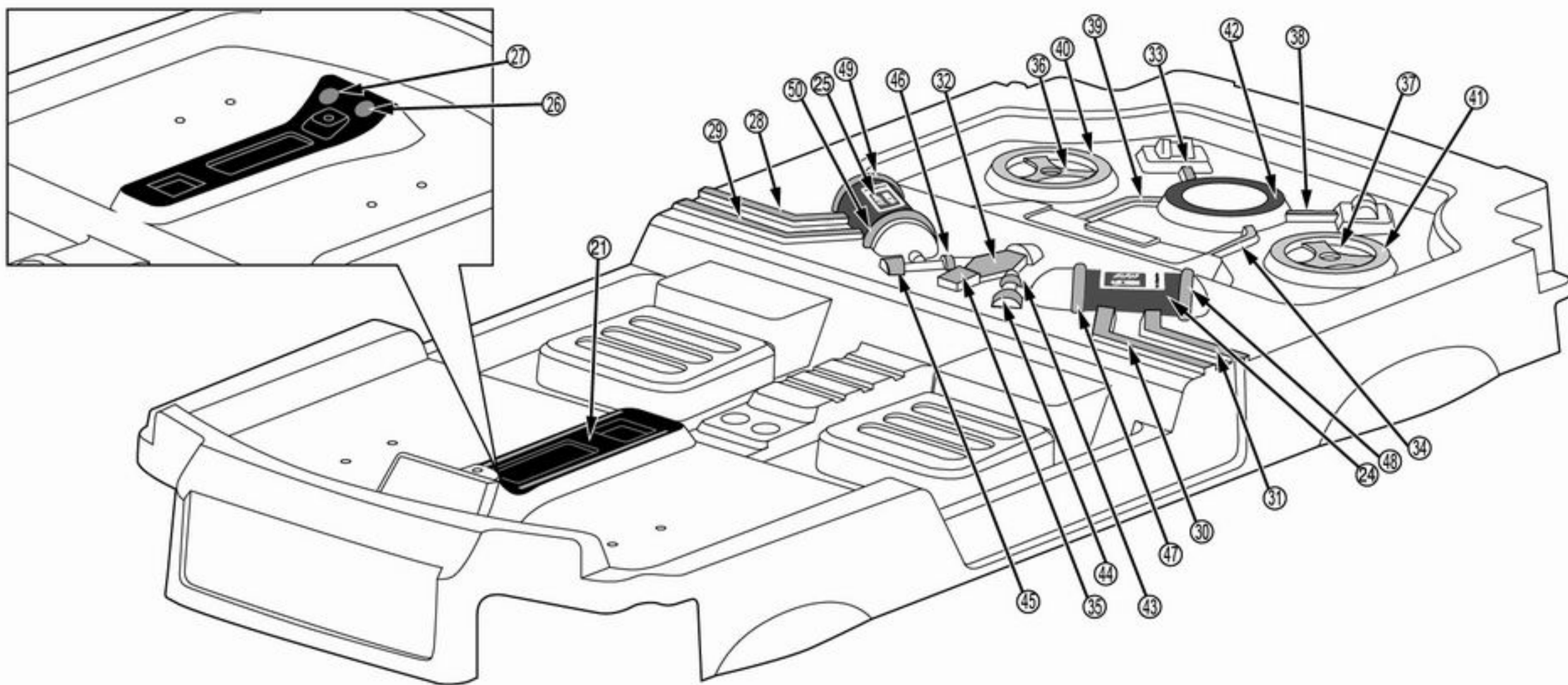


Dashboard (Right)




Dashboard (Left)

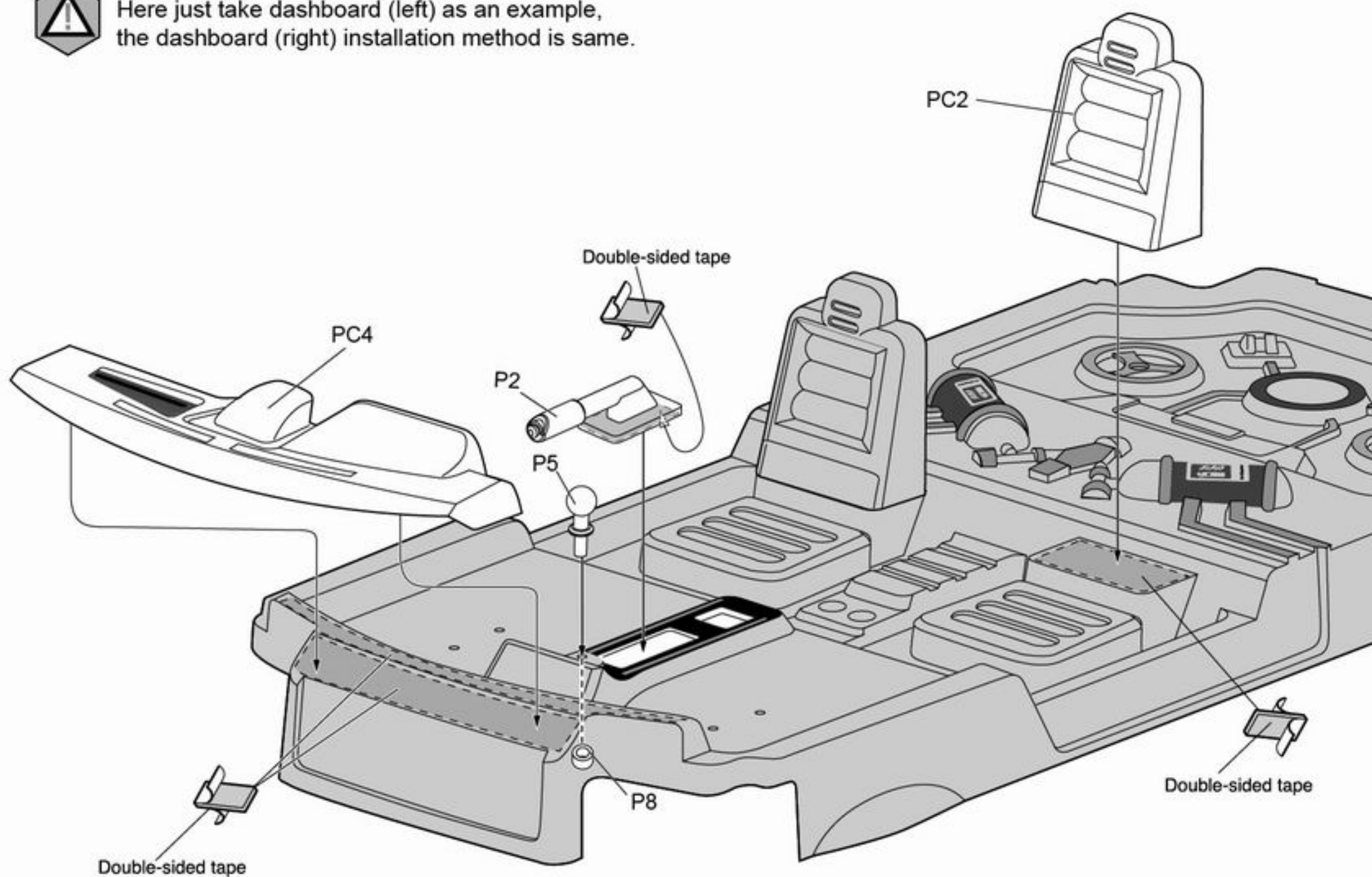


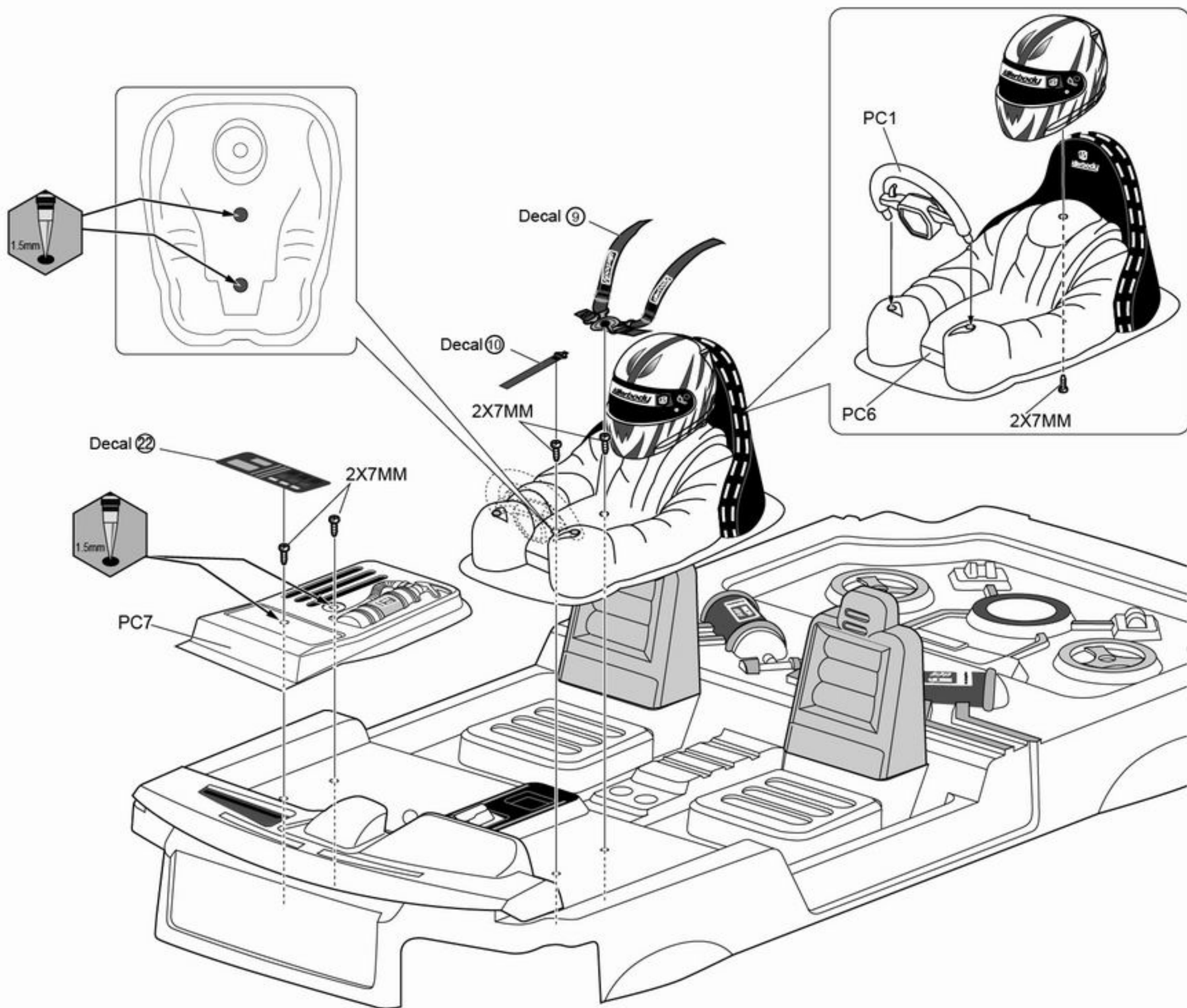


4 Assembling

2X7MM F/H TP SCREW
5

 Here just take dashboard (left) as an example, the dashboard (right) installation method is same.





5 Finished

