

Cockpit Set (Left & Right)

Fit for KB#48765

1/10 Jeep Gladiator Rubicon Hard Body

NO.48776

killerbody

1/10 RC PLANNING INSTRUCTION SHEET

Before beginning assembly, please read these instructions thoroughly!

● Symbols used throughout the instruction manual, comprise:



Smooth rough edge.



Remove.



Pay close attention here!



Must be purchased separately.



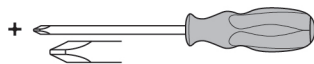
Assemble left and right sides the same way.

The picture on cover was taken in kind.

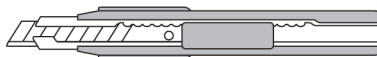


TOOLS RECOMMENDED (NOT INCLUDED)

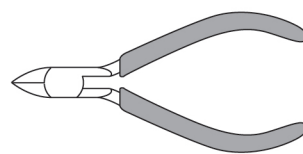
Screwdriver (large)



Modeling knife



Side cutters



Screwdriver (small)



Tweezers

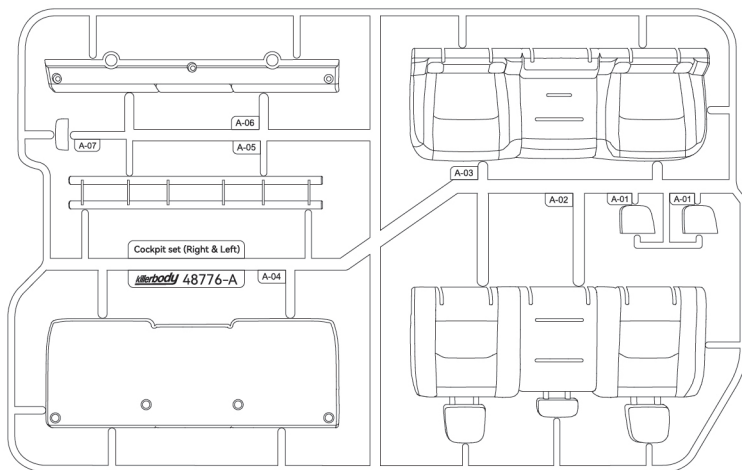


PARTS

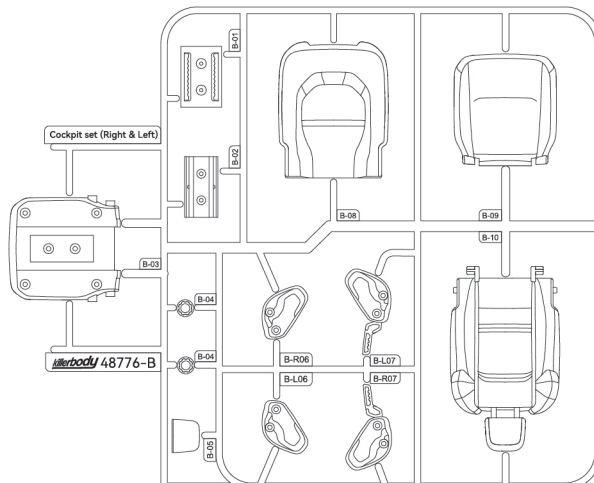
PC print part ----- X1	Dashboard LED light panel ----- X1	PC print part ----- X1	Screws 2X9mm ----- X6
ABS parts ----- X6	Dashboard LED light panel ----- X1	Screws 2X6mm ----- X39	
Decal sheet ----- X1	Flange screws 2.3X6X6mm ----- X8	Flange screws 2X5X5mm ----- X2	

PLASTIC PARTS

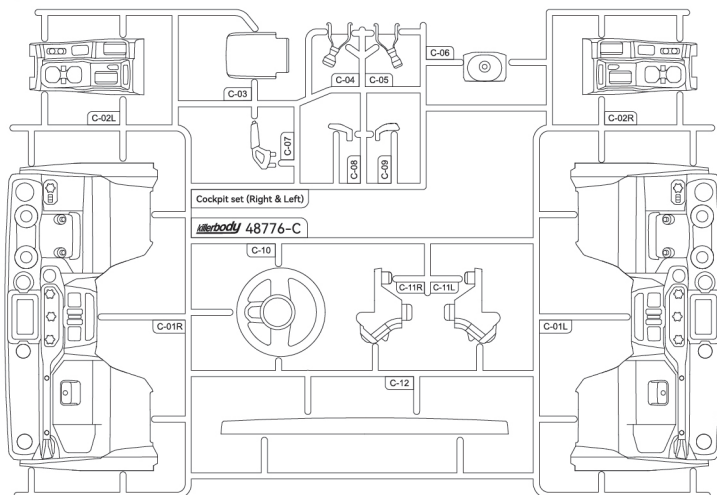
A 48776-A



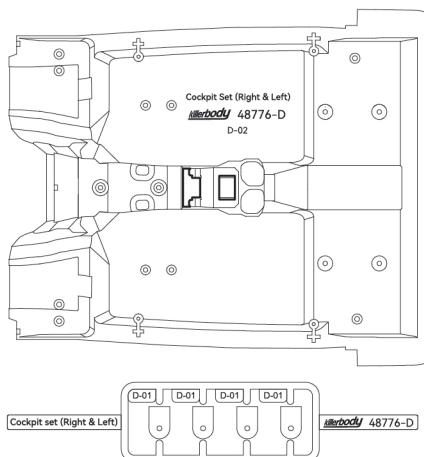
B 48776-B X2pcs



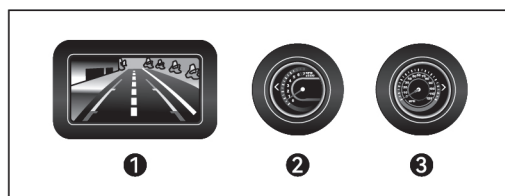
C 48776-C



D 48776-D

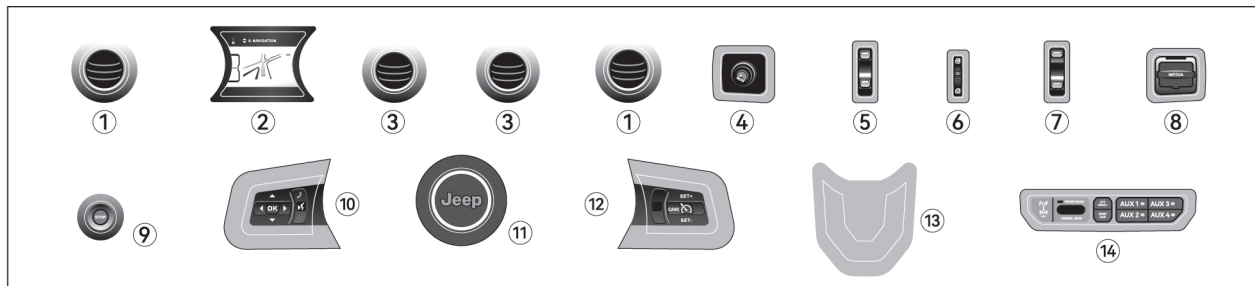


E PC print parts



F Dashboard LED light panel

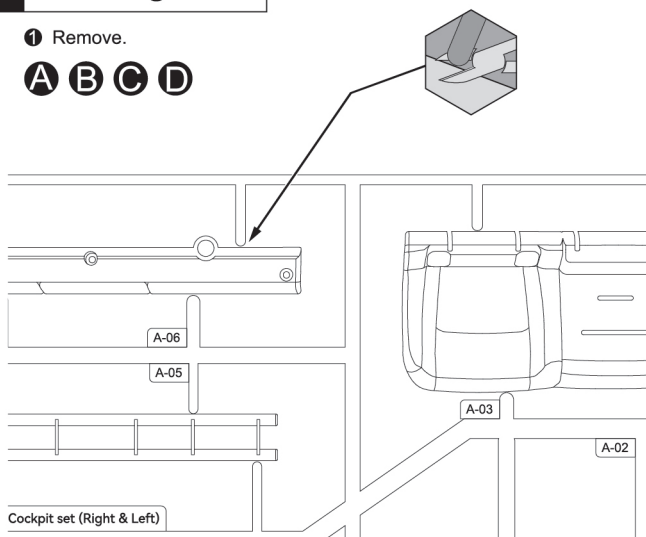




1 Cutting

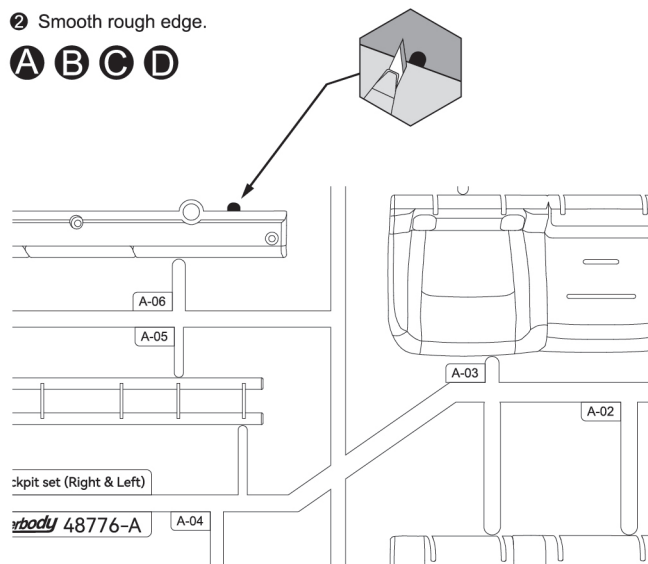
1 Remove.

A B C D



2 Smooth rough edge.

A B C D

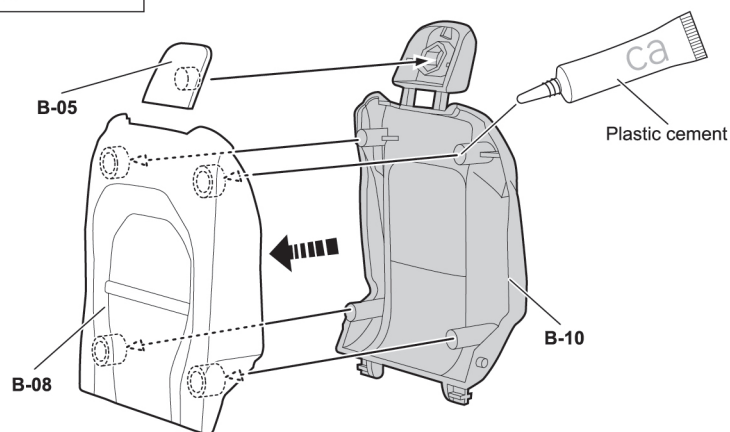


2 Assembling

screws 2X6mm

----- X10

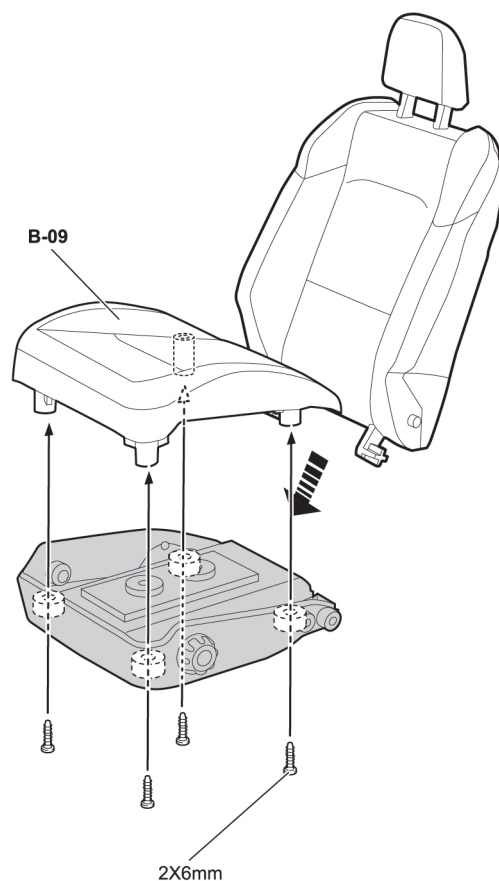
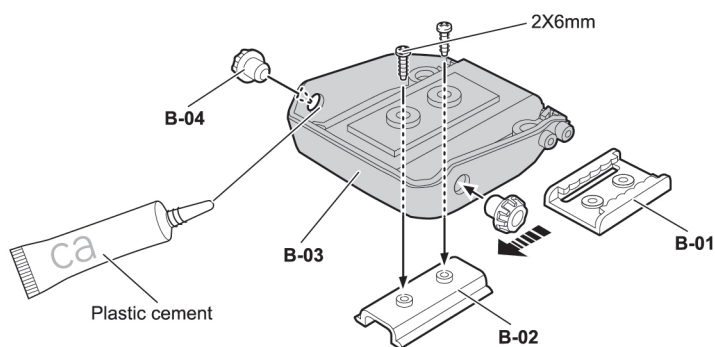
L/R

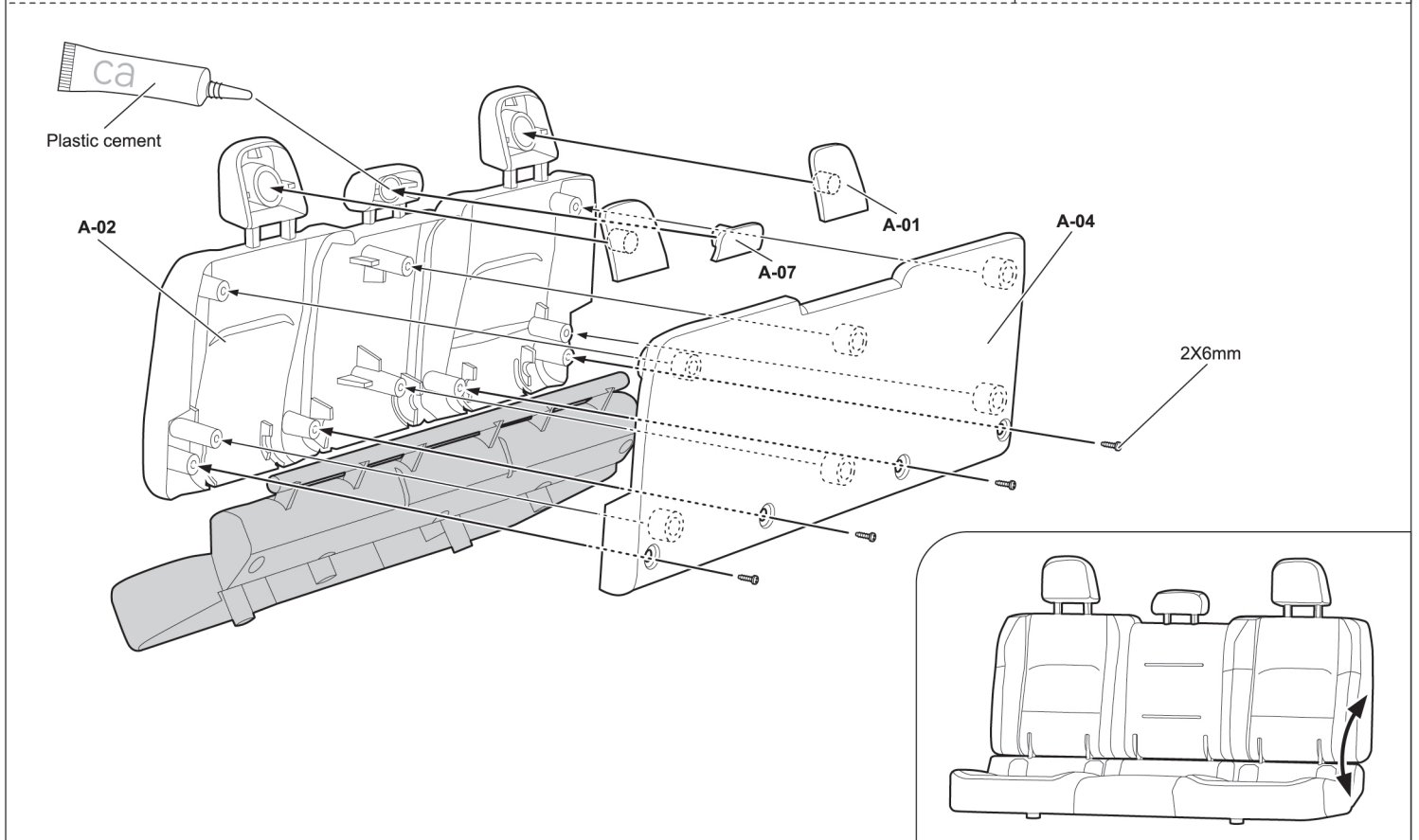
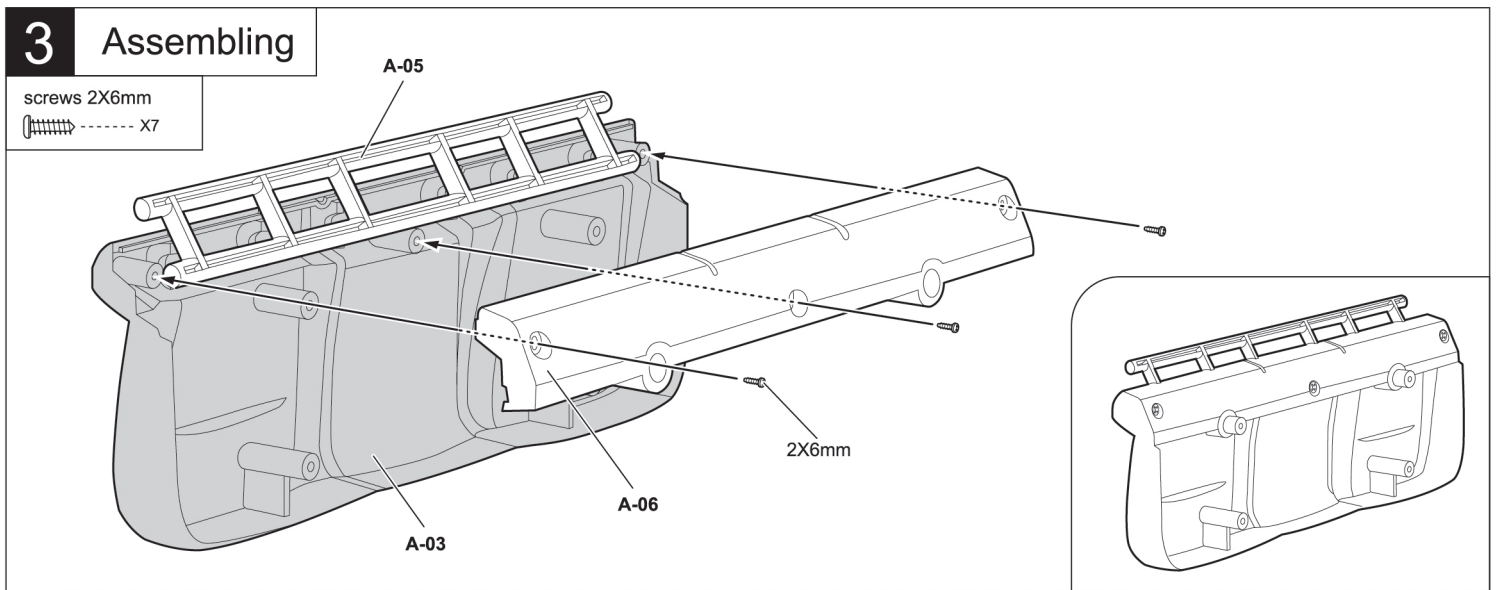
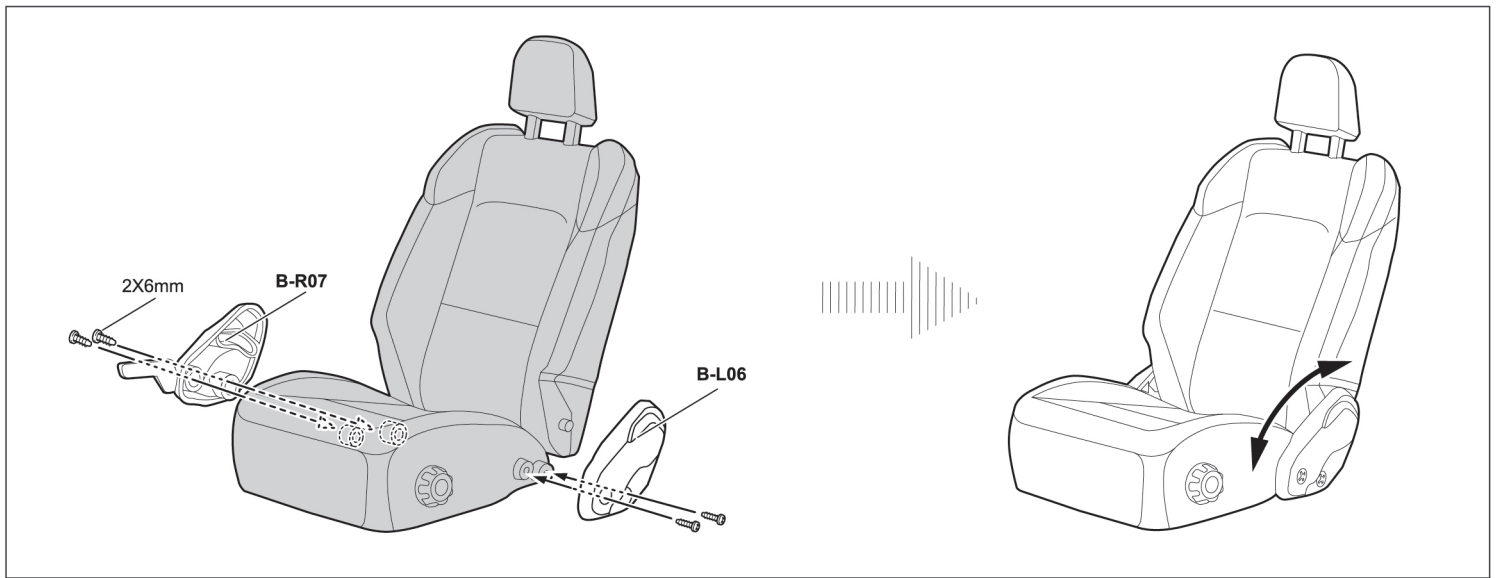


1

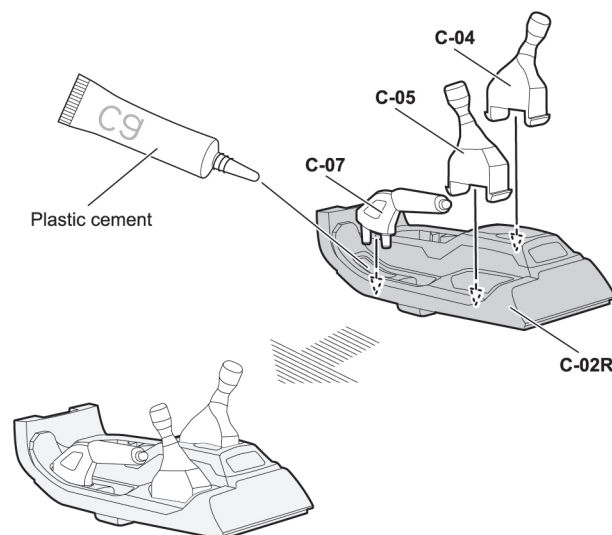
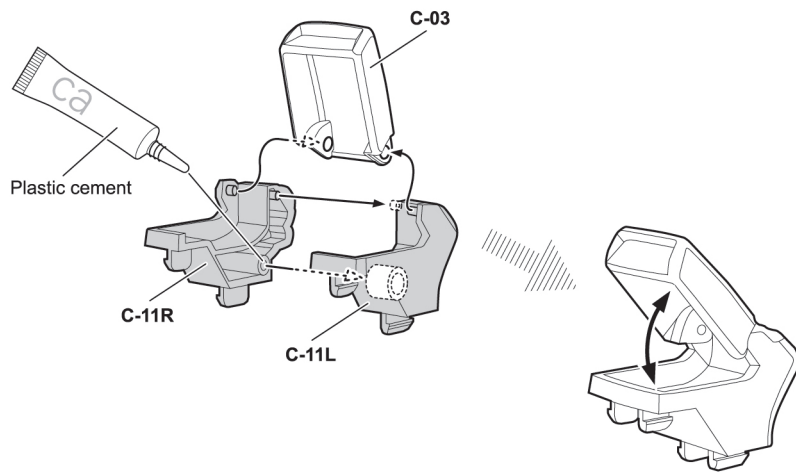
3

2





4 Assembling



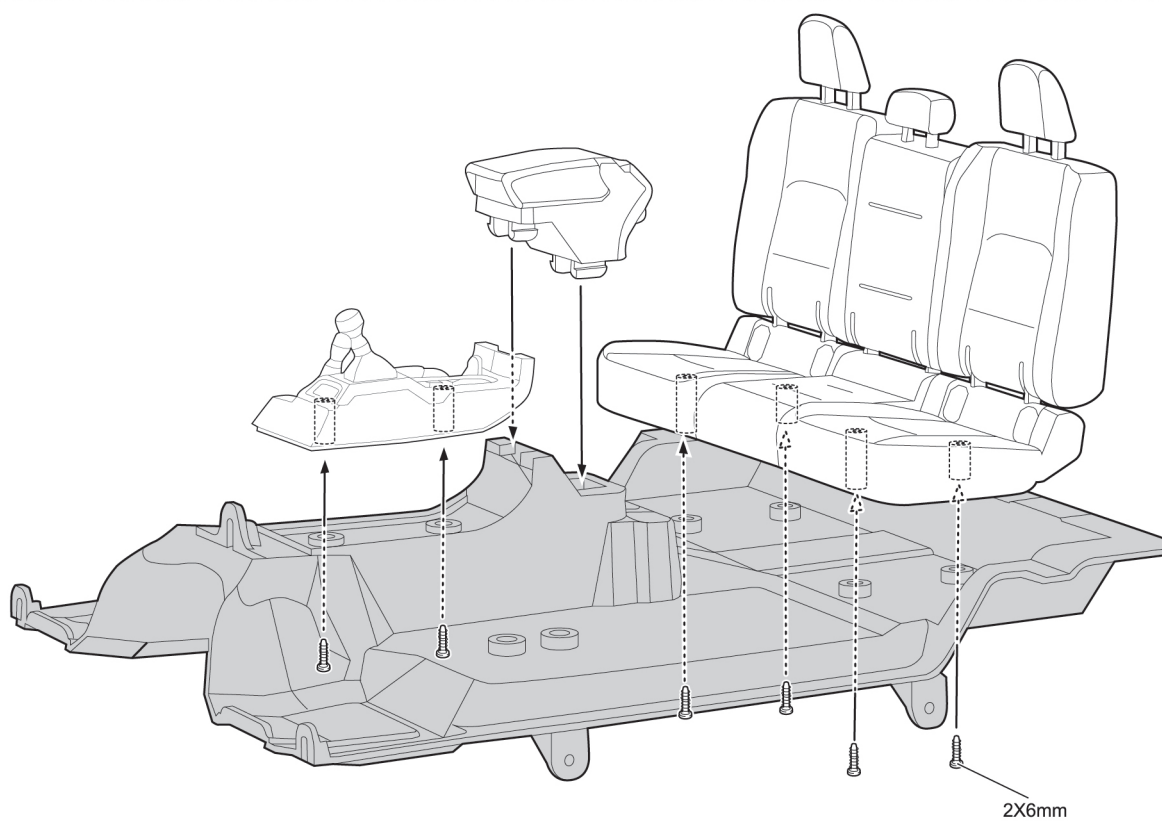
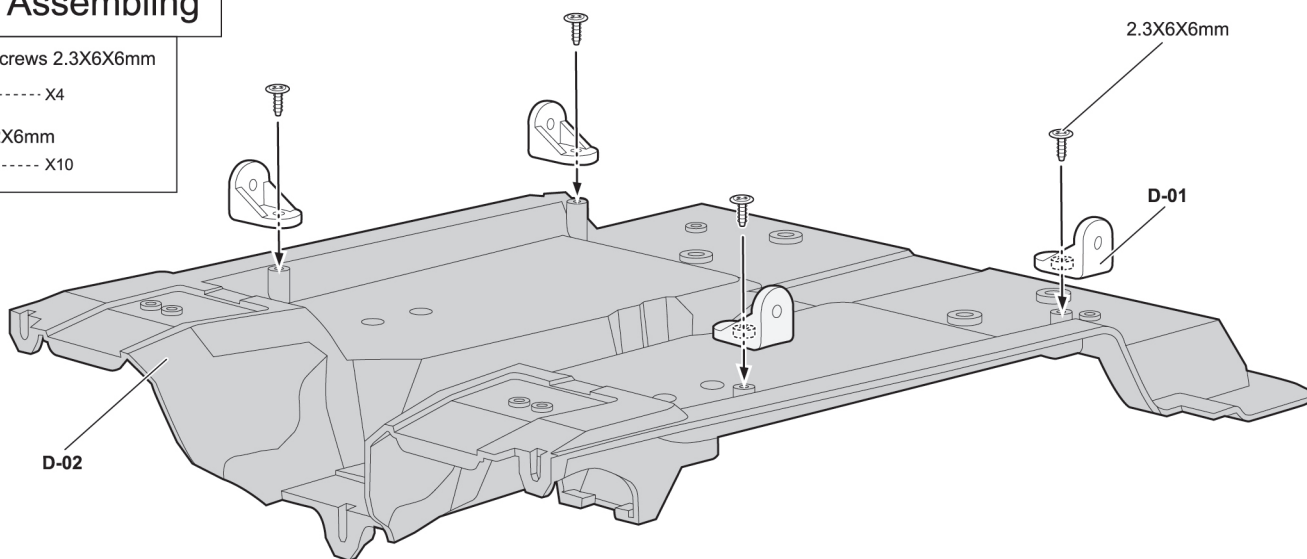
5 Assembling

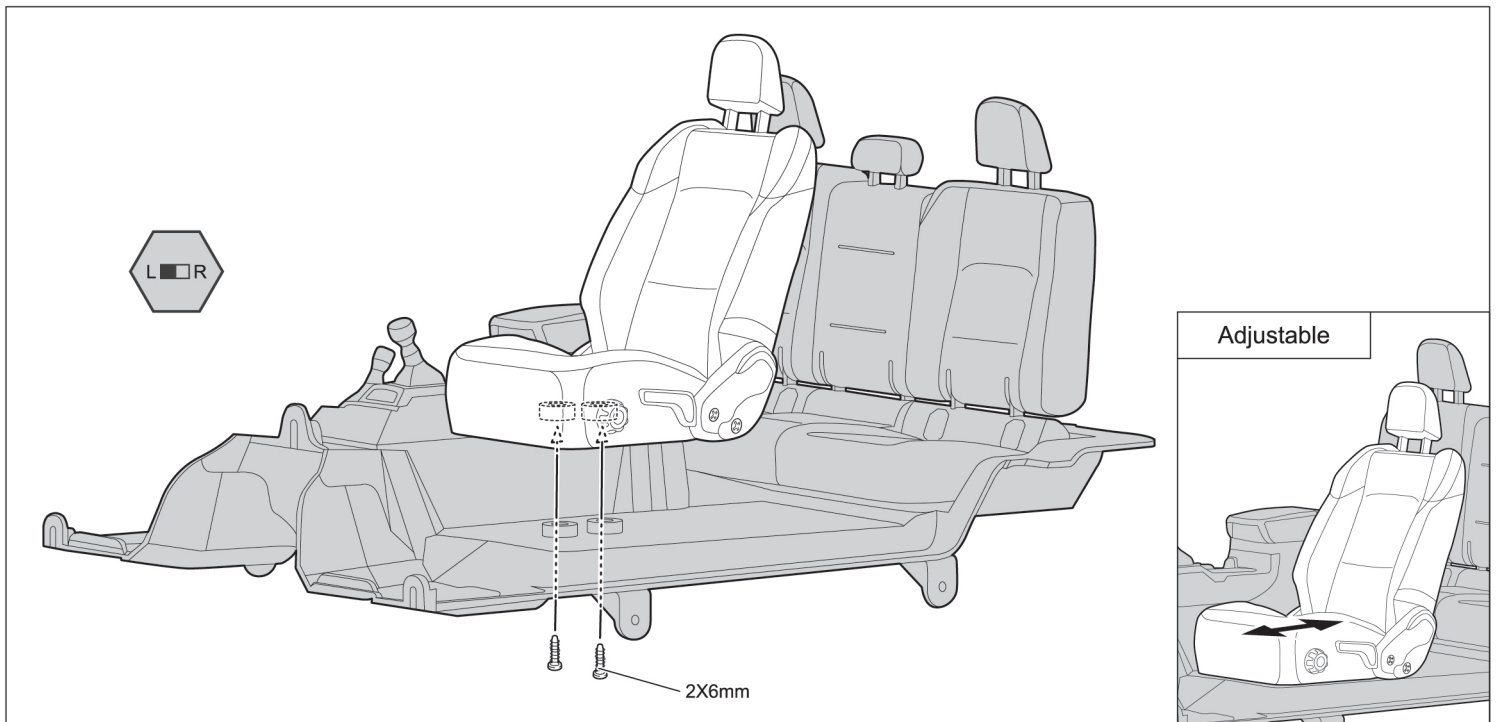
Flange screws 2.3X6X6mm

----- X4

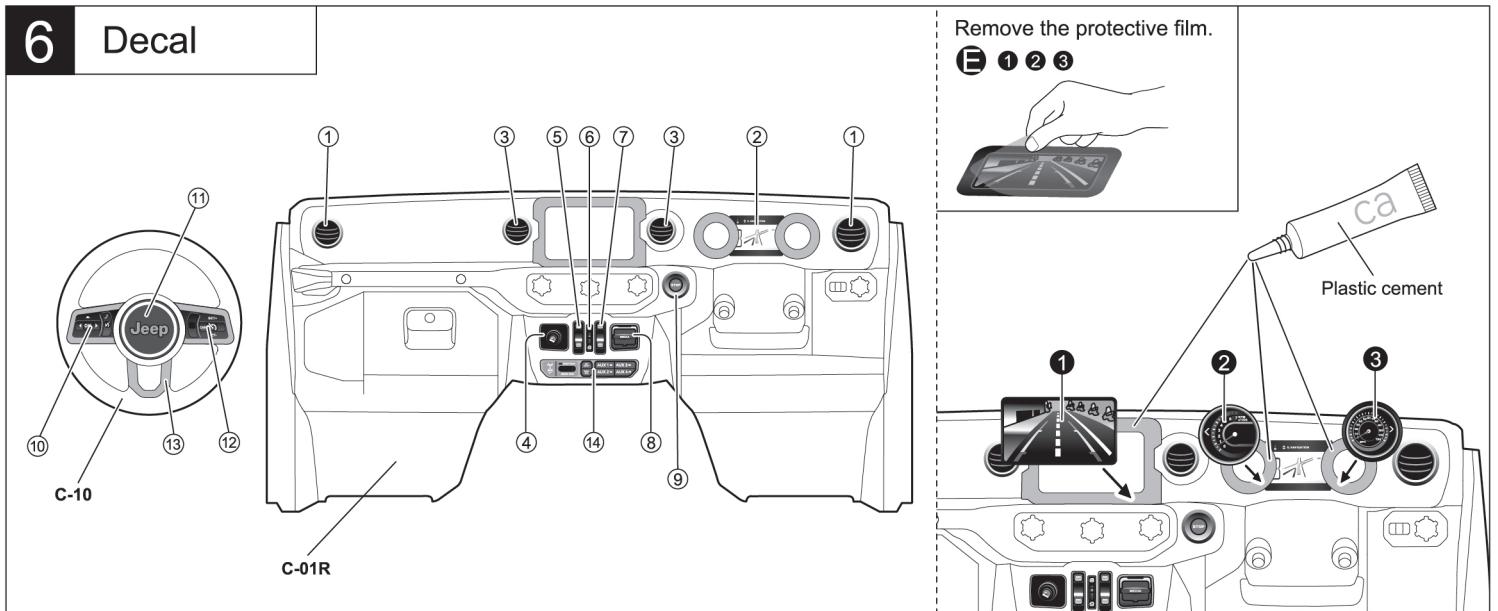
screws 2X6mm

----- X10



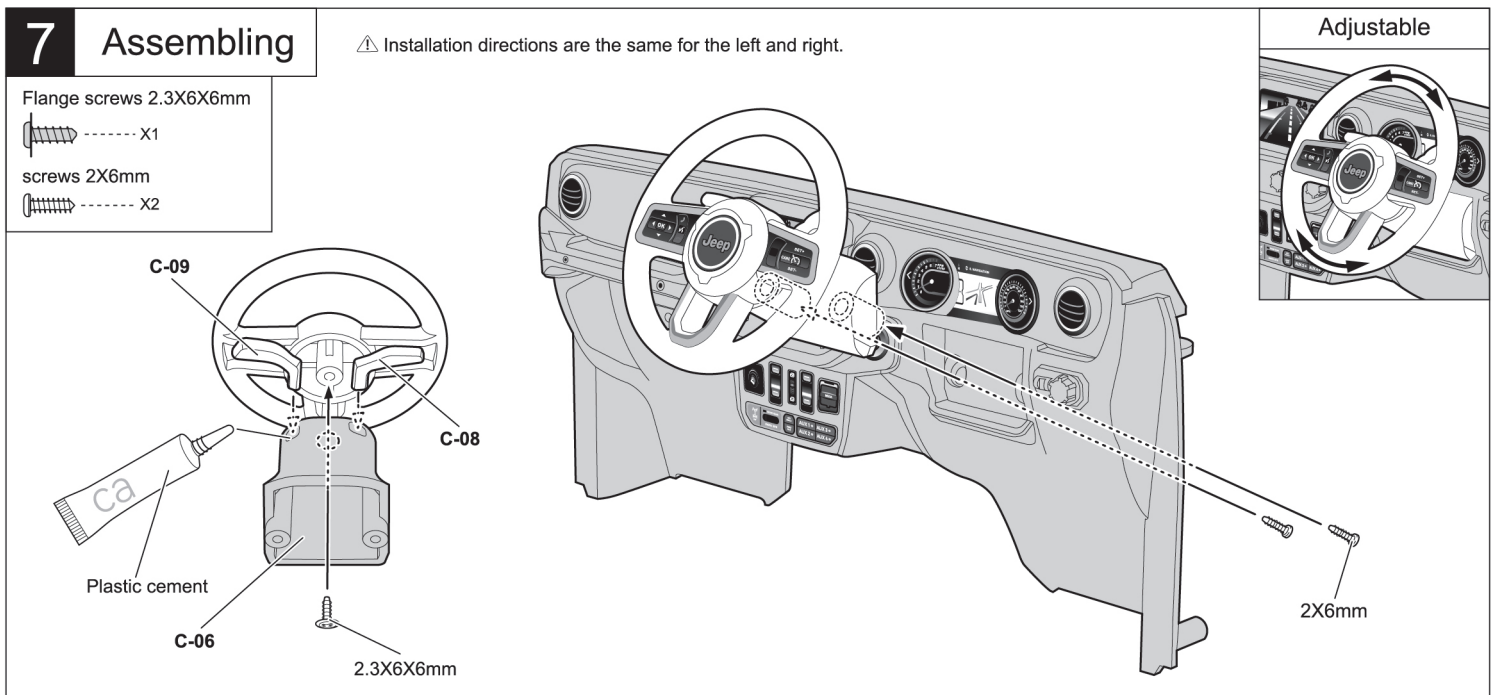


6 Decal



7 Assembling

⚠ Installation directions are the same for the left and right.

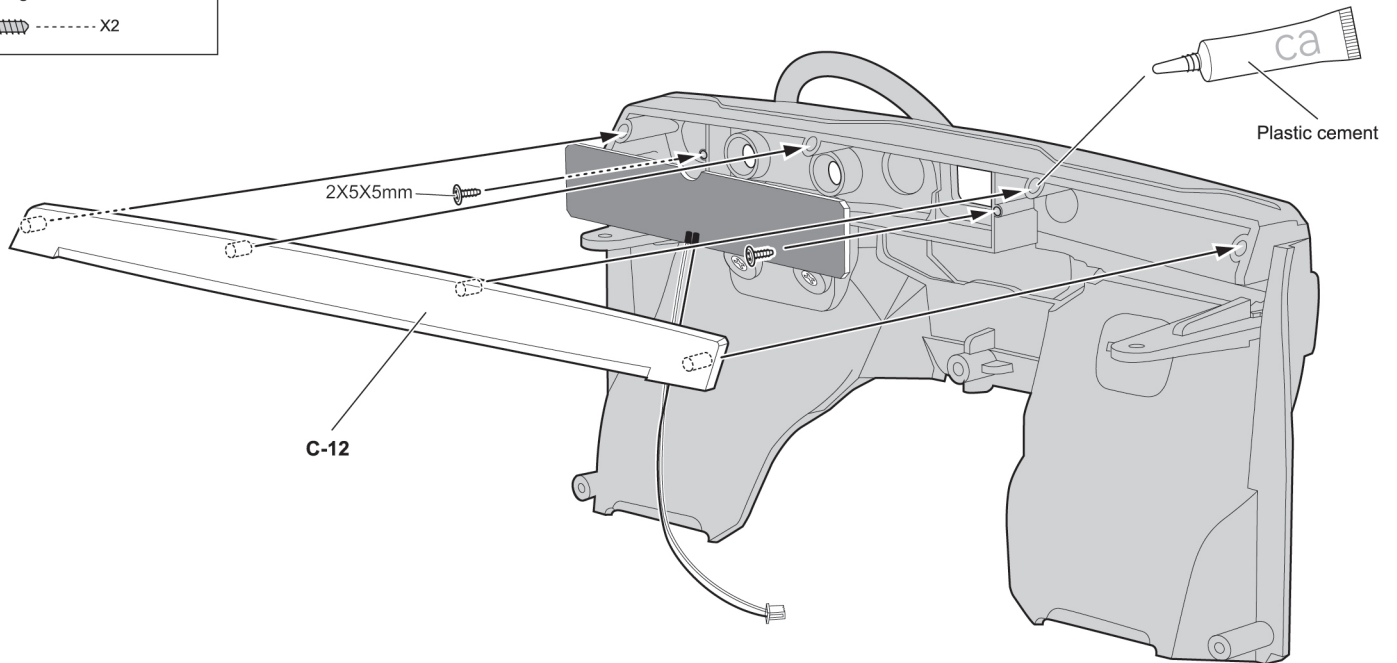


8 Assembling

⚠ The LED light panel is white on the front and black on the back.

Flange screws 2X5X5mm

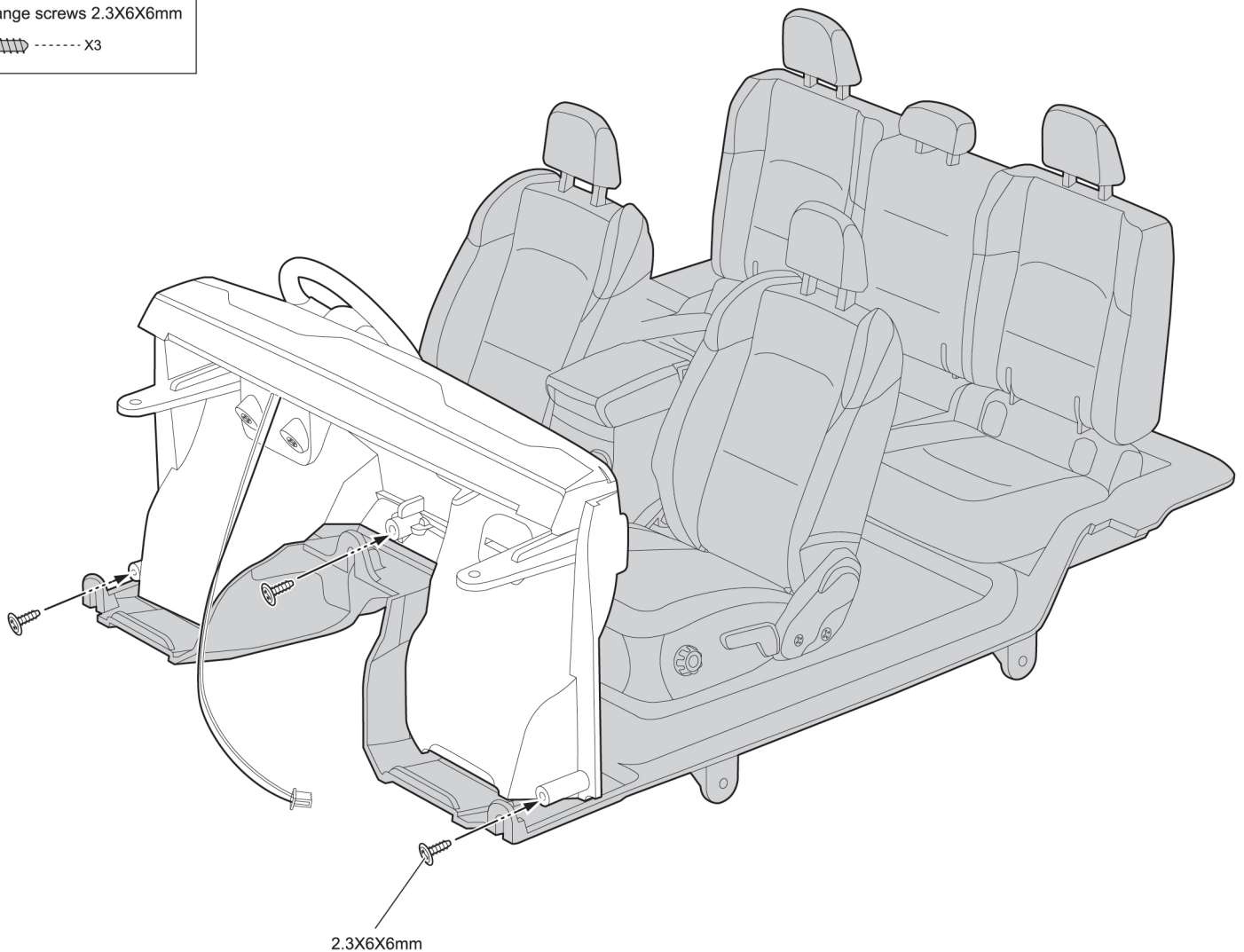
----- X2



9 Finished

Flange screws 2.3X6X6mm

----- X3



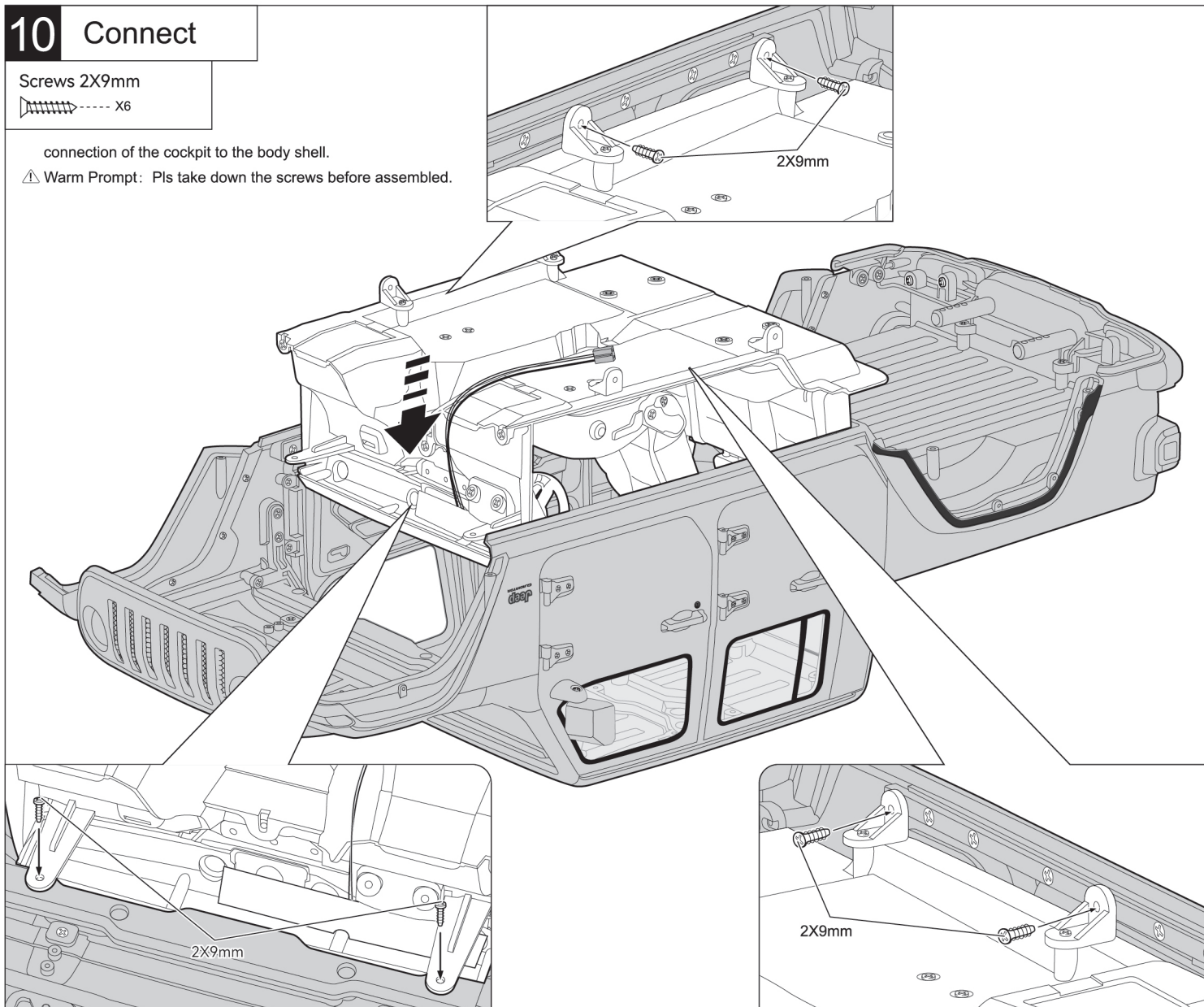
10 Connect

Screws 2X9mm

----- X6

connection of the cockpit to the body shell.

⚠ Warm Prompt: Pls take down the screws before assembled.



Effect picture: KB48776 cockpit installed on KB48765 Jeep Gladiator Rubicon Hard Body kit.

